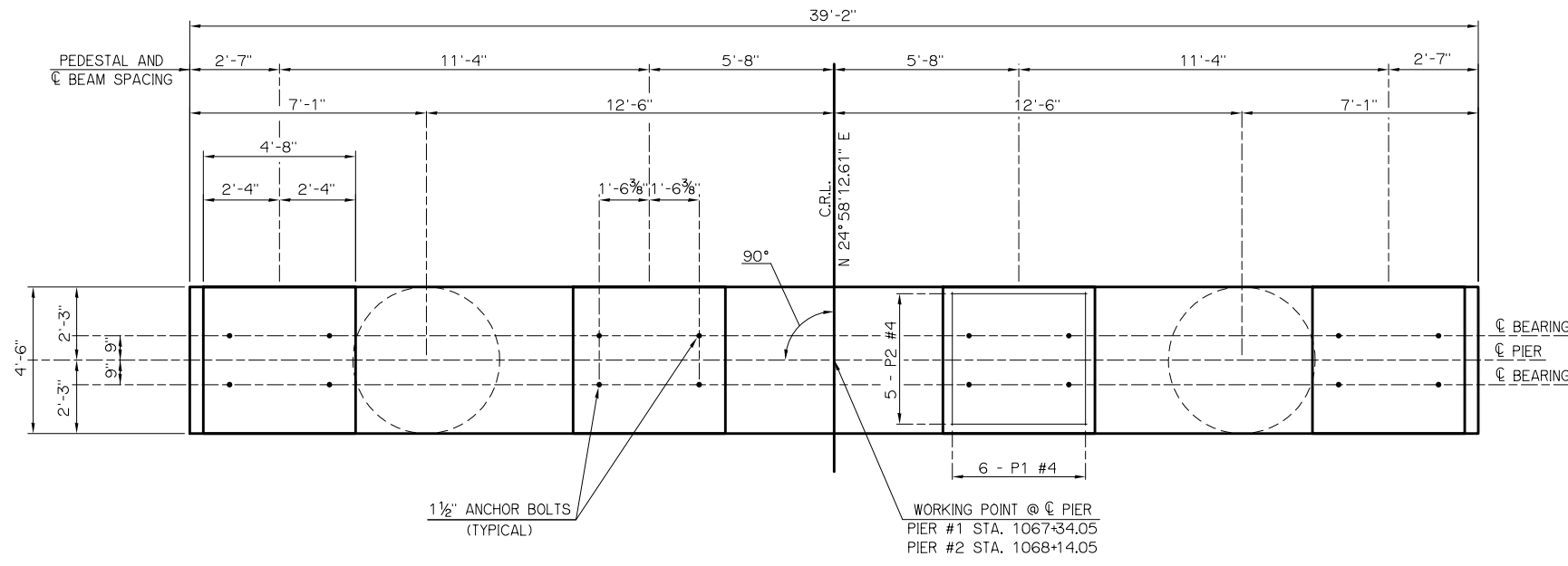
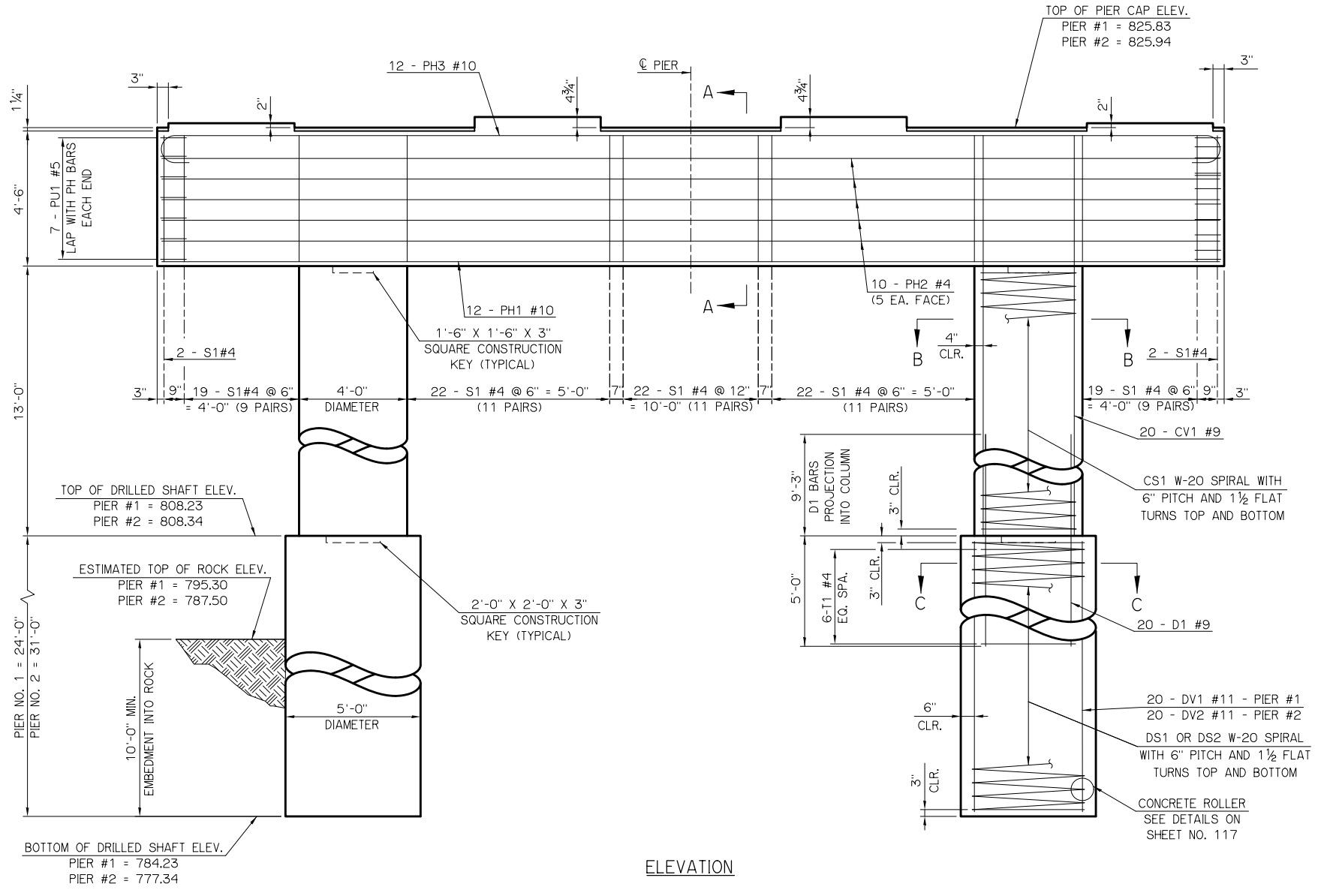


REV. NO.	DESCRIPTION	REVISIONS	DATE



PLAN



ELEVATION



PIER NOTES:

REINFORCING PROJECTING FROM THE DRILLED SHAFT INTO THE COLUMN SHALL BE INCLUDED IN THE PRICE OF THE DRILLED SHAFT. THE PROJECTION LENGTH SHALL NOT BE CONSIDERED ADDITIONAL PAY LENGTH FOR DRILLED SHAFT.

ALL CONCRETE EDGES SHALL HAVE 1 1/2" CHAMFERS, EXCEPT FOR EDGES OF PEDESTALS, WHICH SHALL HAVE 3/4" CHAMFERS.

TREAT TOP OF PIER CAP, INCLUDING ALL SURFACES OF PEDESTALS AND ALL VERTICAL FACES OF PIER CAP WITH PENETRATING WATER REPELLENT SURFACE TREATMENT.

FOR SECTIONS, DETAILS, BENT BARS, AND BAR LISTS, SEE SHEET NO. 117.

SEE STANDARD B40-I-BRG-PC4BT FOR MORE INFORMATION ON ANCHOR BOLTS.

SH-99 OVER BIRCH CREEK	OSAGE COUNTY	Design	RTN	5/12
PIER NO. 1 AND 2 DETAILS BRIDGE "C"		Detail	RJM	5/12
		Check	SBH	5/12
NO. 5730 1228X		Squad	....	
STATE OF OKLAHOMA		DEPARTMENT OF TRANSPORTATION	Engr.	....
JOB PIECE NO. 24261(04)				SHEET NO. 116

Plotted By: rdm Date: 6/7/2017 4:52:46 PM  
 FILE: I:\2010\10K11 Birch Salf Rock Creek\001 - Birch Creek\Final PSE Submittal 6-7-17\116-Pier No 1 and 2 Details Bridge C.dgn